

## MATERIALS / SPECIFICATIONS

- Used in Fire/Acoustical applications
- INTUFX™** Type #3 - 30 times expansion
- Environmentally Safe, Minimal Carbon Footprint
- Standard Color is Black
- Optional - Laminated to wood, aluminum, steel or other solid materials

## OPTIONS

- 13312BK** Black  
**13312BK-PSA** Black with Pressure sensitive adhesive  
**13312RD** Red  
**13312RD-PSA** Red with Pressure sensitive adhesive

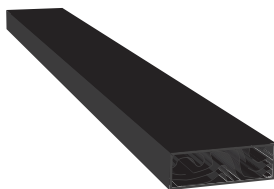
**INTUFX** Order - Part **#1-3-312-BK-PSA**

**MOUNTING LOCATION**  
 #1 - mounted to the door and/or the frame

**OPTIONS**  
**PART #**  
**TYPE 3** - 30X expansion  
**TYPE 4** - 120X expansion

### ABBREVIATIONS

**PSA** - Pressure Sensitive Adhesive



<b>PROJECT :</b>	<b>SUBMITTED BY :</b>
<b>DATE :</b>	<b>NOTES :</b>
<b>COMPANY NAME :</b>	