

MATERIALS / SPECIFICATIONS

- Used in Fire applications
- INTUFX™** Type #4 - 120 times expansion
- Environmentally Safe, Minimal Carbon Footprint
- Standard Color is Black
- Optional - Laminated to wood, aluminum, steel or other solid materials

OPTIONS

- 14312BK** Black
14312BK-PSA Black with Pressure sensitive adhesive
14312RD Red
14312RD-PSA Red with Pressure sensitive adhesive

INTUFX Order - Part **#1-4-312-BK-PSA**

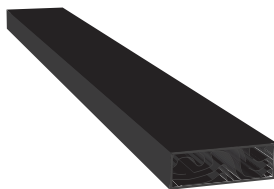
MOUNTING LOCATION
 #1 - mounted to the door and/or the frame

PART #

OPTIONS
TYPE 3 - 30X expansion
TYPE 4 - 120X expansion

ABBREVIATIONS

PSA - Pressure Sensitive Adhesive



PROJECT :	SUBMITTED BY :
DATE :	NOTES :
COMPANY NAME :	